

The New Jetta

Volkswagen Group Sales India Private Limited
Produced in India
Subject to change without notice
Issue: November 2013
www.volkswagen.co.in

Your Volkswagen Dealer



Volkswagen. Das Auto.

The New Jetta



Euphoria. At the turn of a key.



Make a statement without as much as uttering a word.



Xenon Headlights

Adding class in the new Jetta is as easy as lighting up the road ahead with the unmistakable combination of LED daytime running lights and Xenon lamps with retractable washers.



Two-piece Tail Lights

Integrated with elegant indicators, these lights enhance the rear styling with their exquisite look and give the new Jetta its distinctive identity.



Fog Lamps

The superior fog lamps on the new Jetta ensure enhanced visibility and light up the road ahead during bad weather.



Exterior Rear-view Mirror

The finely designed rear-view mirrors are carefully built to perform their task admirably. They are electrically adjustable as well as foldable, and come integrated with turn indicators.



Aesthetically Designed Alloy Wheels

The new Jetta offers two advanced kinds of alloy 6½ J x 16 wheels: the 'Atlanta' as well as the 'Sedona' wheels. Both boast of 205/55 R16 tyres and anti-theft wheel bolts. These wheels embody the perfect balance of form and function that defines the new Jetta.

With 140 PS (103 kW) of exhilarating power and a distinctively elegant yet sporty look, the new Jetta is as much a thrill to drive as it is to behold. With its sleek contours, sculpted bodylines and aesthetic detail, the new design is refined and timeless, exuding quality, charisma and finesse.



Luxury goes into overdrive. Unleash the Luxury.

What the exterior of the Jetta promises, the interior delivers. Take the minute attention devoted to the detailing for instance, whether in the uber-comfortable leather-stitched upholstery or in the plush armrests. Carefully chosen, every feature, every little styling element inside the new Jetta is crafted from the highest quality materials to provide comfort and refinement that is exceptional.





Who says comfort and an adrenaline rush are mutually exclusive?

Cleverly designed and crafted to provide a truly luxurious ride, the new Jetta contains a wealth of features that make every drive a stress-free, relaxed experience.

1. Cruise Control

The cruise control system works electronically to help regulate your speed. It reduces the stress on your driving and offers you more comfort on long journeys by maintaining a constant speed.

2. Sleek Styling

White instrument lighting and red needles make for an immediate and impressive aesthetic impact, while the multi-function display shows important information as you travel.

3. 12-way Electrically Adjustable Driver Seat

Comfort gets its due in every aspect of the new Jetta. Never more so than with the driver seat experience. The 12-way adjustable driver seat means that the seat height, backrest incline, length position, seat incline and lumbar support are perfectly customisable, regardless of the driver's build and size.

4. State-of-the-art Stereo System

Let your favourite music add to the excitement of the drive. The RCD 510 touch screen radio/dash-mounted MP3 compatible, six CD auto features a large 6½ inch colour display, with intuitive menu navigation and touch screen operation. It also features an AUX-In socket and an adapter cable for connection to an external multimedia source as well as a SD memory card slot.

5. Climatronic System

The new Jetta ensures the road is the only thing you focus on. Experience Climatronic air conditioning that automatically regulates the temperature inside as it changes outside, ensuring optimum cooling and humidity, without you having to even look at it.

All the space you want. And then some more.

1. A Nearly-insatiable Boot

The redesigned boot has a maximum load volume of 510 litres and, along with a well-placed storage box, provides plenty of space for all your luggage needs, increasing flexibility and convenience. The rear seats in the new Jetta are foldable, either completely or to a 60:40 ratio, letting you accommodate even more luggage in the boot.

When the rear centre armrest is folded down, it provides a useful load-through provision, enabling you to transport bulky objects, such as a beach umbrella, with the greatest of ease. The rear centre armrest also features two cup-holders.

2. Multi-function Armrests

The front centre armrest comes with its own spacious storage compartment and cover, ensuring that your essentials are within easy reach.

3. Essentials. At an Arm's Length

The spacious glove compartment is designed to discreetly hold items that you may need at a moment's notice, with plenty of space for various requirements. There's a special sunglasses compartment located just above the rear-view mirror so that your shades are always at hand.



1



Built for maximum safety.

Only when you feel safe can you drive confidently. Which is why, safety is such a fundamental concept in the new Jetta. It's also why a whole range of new generation safety features are fitted as standard.

1. Six airbags worth of peace of mind

A comprehensive six-airbag safety system gives maximum protection to the driver and the passengers. This includes a curtain airbag system for front and rear passengers, front side airbags, as well as the standard driver's and front passenger's airbags, with passenger's airbag deactivation switch.

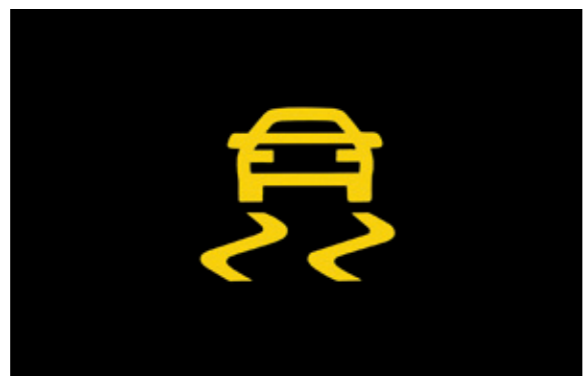
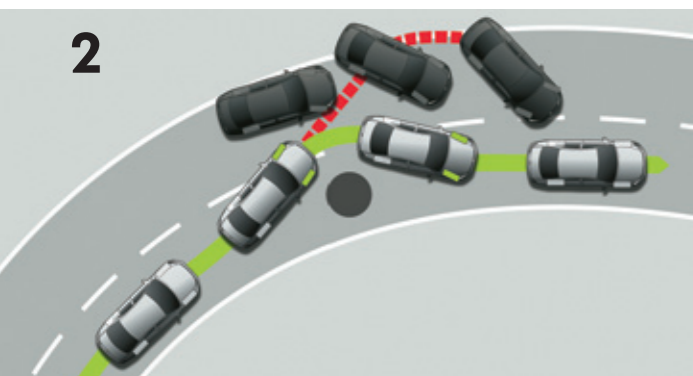
2. Electronic Stabilisation Programme (ESP)

This vital safety feature recognises critical driving situations and reacts in milliseconds by targeting brake and engine management systems controlling the speed of individual wheels and helping to bring the vehicle under control. As a result, the vehicle achieves maximum directional stability. Further, active safety features include an Anti-lock Braking System (ABS), Electronic Differential Lock (EDL) and Traction Control (ASR).

Parking sensors:

The new Jetta is as easy to park, as it is to drive. Audible and visual signals alert the driver to any obstacles in the way. In addition, an Optical Parking Display extends the functions of the sensors by indicating your position on the vehicle's central display during parking.

2



Engines and transmission.



1. Turbo-charged Powerhouse

The revolutionary TSI engine is a highpoint of German engineering and innovation. Delivering maximum power with minimum fuel consumption, this 1.4L engine exudes a stunning 122 PS (90 kW) of power. Besides the power-packed performance, this engine also emits lower CO₂, thus reducing the impact on the environment.



2. Brilliantly Quiet

The TDI engine eliminates any compromises – you can have performance as well as exceptional economy. This diesel engine benefits from the latest common rail technology, resulting in a stunning 140 PS (103 kW) of power at 4200 rpm and exceptional torque of 320 Nm at 1750-2500 rpm, alongside low fuel consumption. This technology not only ensures excellent performance and fuel consumption, but also makes it pleasantly quiet.



3. Six-speed Smoothness

The revolutionary six-speed DSG* transmission provides the best of both worlds, combining super-smooth and extremely fast gear changes with performance and economy. This ensures maximum power with minimal fuel consumption.

***Available in Jetta 2.0 CR TDI (AT), Highline.**

- Specifications are subject to change without prior notice
- Actual appearance/colour shade may slightly differ

The new Jetta comes with the powerful and efficient TSI and TDI engines.

Technical Specifications.

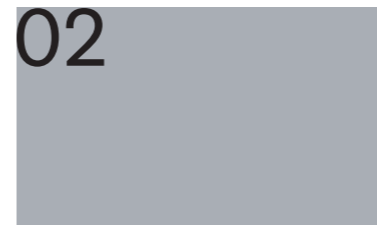
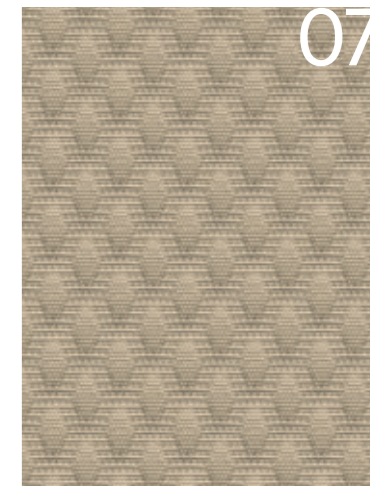
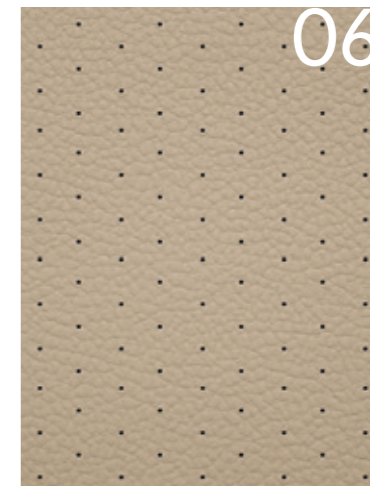
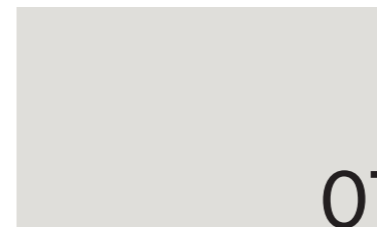
Versions		Jetta 1.4L TSI (MT)	Jetta 2.0L CR TDI (MT/AT)
Variants available		Trendline/Comfortline	Trendline/Comfortline/Highline [#]
Engines	Engine Type	4 Cylinder, In-Line, Turbocharged, Intercooled Petrol Engine	4 Cylinder, In-line CR, Turbocharged Diesel Engine
	Displacement (cc)	1390	1968
	Fuel-efficiency (km/l)*	14.69	MT-19.33/AT-16.96
Performance	Max. power [PS(kW)@rpm]	122 (90) @ 5000	140 (103) @ 4200
	Max. torque (Nm@rpm)	200 @ 1500-4000	320 @ 1750-2500
	Top Speed (kph)**	202	MT-210/AT-208
Transmission		6-speed manual	MT-6-speed manual/AT-6-speed automatic (DSG)
Steering	Type	Electric, Power assisted	Electric, Power assisted
	Minimum turning radius (m)	5.5	5.5
Tyres and Wheels	Wheel rim size	6.5J X 16	6.5J X 16
	Tyre size	205/55 R16	205/55 R16
Brakes	Front	Disc	Disc
	Rear	Disc	Disc
Suspension	Front	Coil Spring with shock absorbers and suspension stabiliser	Coil Spring with shock absorbers and suspension stabiliser
	Rear	Multi-link suspension with stabiliser	Multi-link suspension with stabiliser
Dimensions	Length (mm)	4644	4644
	Width (mm)	1778	1778
	Height (mm)	1453	1453
	Wheelbase (mm)	2633	2633
	Ground clearance (mm)	159	159
	Kerb weight (kg)	1403	MT-1445/AT-1460
	Fuel tank capacity (l)	55 net	55 net

* Test results of rule 115 of CMVR

** Internal test data

[#]Automatic only available on Highline

Available in select models | Specifications are subject to change without prior notice | Actual appearance/colour shade may slightly differ

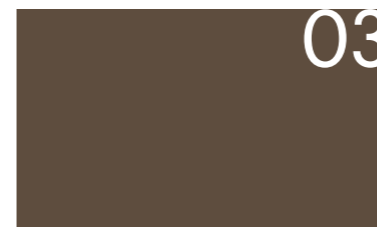


Paint, Décor, Upholstery.

Colours:
 01 Candy White (B4)
 02 Reflex Silver Metallic (8E)
 03 Toffee Brown Metallic (4Q)
 04 Deep Black Pearl Effect (2T)
 05 Platinum Grey (2R)

Leatherette:
 06 Cornsilk Beige (NT)

Fabric:
 07 Cornsilk Beige (JP)



Features

	Trendline	Comfortline	Highline
Exterior			
Body-coloured door handles and mirrors	•	•	•
Dual exhaust pipes	•	•	•
Turn indicators integrated in exterior mirrors	•	•	•
Shark fin 'Diversity' antenna	-	-	•
Full-size spare wheel (steel)	•	•	•
Rear fog light	•	•	•
Front fog lights with static cornering lights	-	•	•
Chrome finish on radiator grill	-	•	•
Chrome finish on front air dam	-	•	•
Decorative chrome strip on side windows	-	-	•
16" 'Sedona' alloy wheels (set of 4)	•	•	-
16" 'Atlanta' alloy wheels (set of 4)	-	-	•
LED number plate lighting	•	•	•
Xenon headlamps	-	-	•
LED daytime running lights	-	-	•
Dynamic cornering lights	-	-	•
Headlamp washer	-	-	•

	Trendline	Comfortline	Highline
Interior			
Small leather package (steering wheel, gear shift knob and handbrake grip)	•	•	•
Front center armrest with storage box	•	•	•
Rear AC vents	•	•	•
Sunglass holder	-	•	•
60:40 split folding rear seat backrest	•	•	•
Lockable and illuminated glove compartment	•	•	•
Chrome interior package	-	•	•
Rear center armrest with load-through provision	-	•	•
Multi-function display	•	-	-
Multi-function display-Plus	-	•	•
'Cardeol' fabric seat upholstery	•	-	-
Leatherette upholstery	-	•	•

	Trendline	Comfortline	Highline
Safety and Security			
Disc brakes front and rear	•	•	•
Electronic Stability Control (ESC)	•	•	•
Anti-lock Braking System (ABS) with brake assist	•	•	•
Anti Slip Regulation (ASR)	•	•	•
Electronic Differential Lock (EDL)	•	•	•
Hill hold control	•	•	•
Height-adjustable front seat belts	•	•	•
Seat belt tensioner (front)	•	•	•
3-point rear centre seat belt	•	•	•
ISOFIX (mounting points for 2 child seats on rear seat bench)	•	•	•
3 rear head restraints	•	•	•
Central locking with 2 remote control folding keys	•	•	•
Electronic engine immobiliser	•	•	•
Engine and transmission guard	•	•	•
Driver and front passenger airbag	•	•	•
Front passenger airbag deactivation	•	•	•
Curtain airbag for front and rear passengers	•	•	•
Side airbags, front	•	•	•
Retro reflectors in all doors	•	•	•
Brake pad wear indicator	•	•	•
Comfort and Convenience			
'Climatronic' dual zone air conditioning system	•	•	•
Cooled glove box	•	•	•
Tilt and telescopic adjustment for steering wheel	•	•	•
Windshield in heat insulating glass	•	•	•
Green heat insulating glass in side and rear windows	•	•	•

	Trendline	Comfortline	Highline
Comfort and Convenience			
Illuminated vanity mirrors	•	•	•
Front seats with height adjustment	•	•	•
Rain sensor	-	•	•
Park distance control (front and rear) with acoustic warning	-	•	•
Exterior mirrors, electrically adjustable and heated	•	-	-
Exterior mirrors, electrically adjustable, foldable, heated with surround lighting and kerb view	-	•	•
Aspherical right side exterior mirror	•	•	•
'RCD 220' CD player, 4 speakers (front), SD card slot, USB input, Rear window antenna	•	-	-
'RCD 320' CD player, 4 speakers (front), SD card slot, USB input, Rear window antenna, Bluetooth connectivity	-	•	-
'RCD 510' touch screen music system with 6 CD changer, Aux-In, 8 speakers and bluetooth connectivity	-	-	•
Mobile device interface MEDIA-IN adapter cable in glove compartment	-	-	•
Paddle shift for DSG transmission	-	-	•
12-way electrically adjustable driver seat	-	-	•
Lumbar support for driver seat	-	•	-
Electrically adjustable lumbar support for driver	-	-	•
Cruise control	-	-	•
Auto-dimming interior mirror	-	•	•
Power windows front and rear	•	•	•
Storage pockets on front seat back	-	•	•
Automatic headlamp activation	-	•	•
Coming home and leaving home function for headlamps	-	•	•
12 v socket at front and rear	•	•	•
Front reading lights	-	•	•